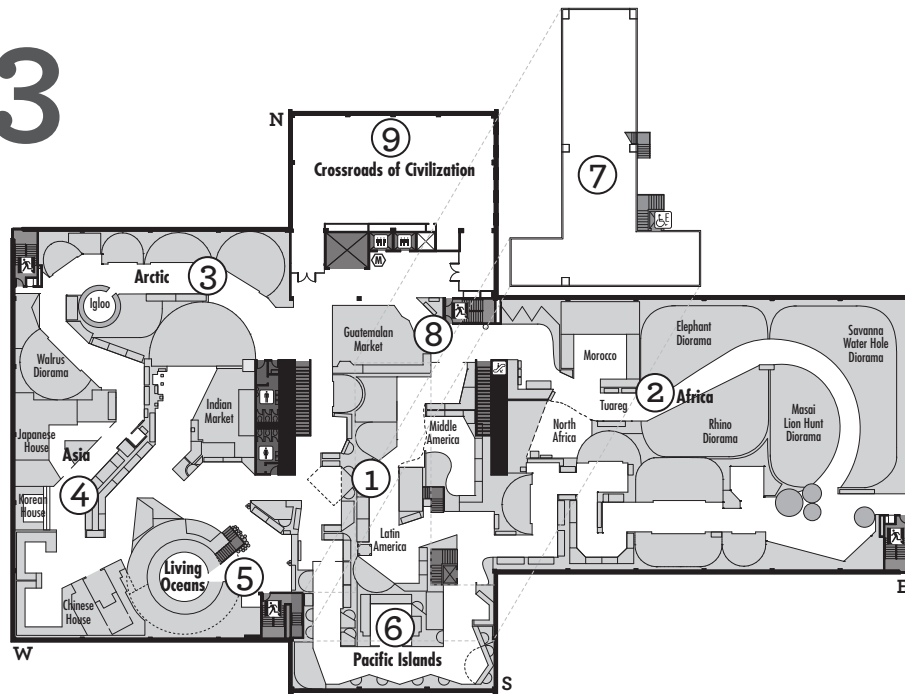


# 3



## THIRD FLOOR

### 1. Latin America

Follow lively music and experience the colorful cultures of South, Central and Middle America.

### 2. Africa

Trek through Africa's lush rain forests, searing deserts and vast savannas.

### 3. Arctic

Feel the chill, hear the cruel winds and learn about the constant struggle of life in this region.

### 4. Asia

See the mesmerizing color and beauty of rich cultural traditions.

### 5. Living Oceans

Visit the blue planet and explore the dynamics of marine life.

### 6. Pacific Islands

Let rhythmic drumming guide you through captivating landscapes and culture.

### 7. Pre-Columbian America (Mezzanine)

See more than 25 centuries of pre-Columbian art and technology.

### 8. Student Exhibit

A temporary annual exhibition created by UW-Milwaukee/MPM Museum Studies graduate students.

### 9. Crossroads of Civilization

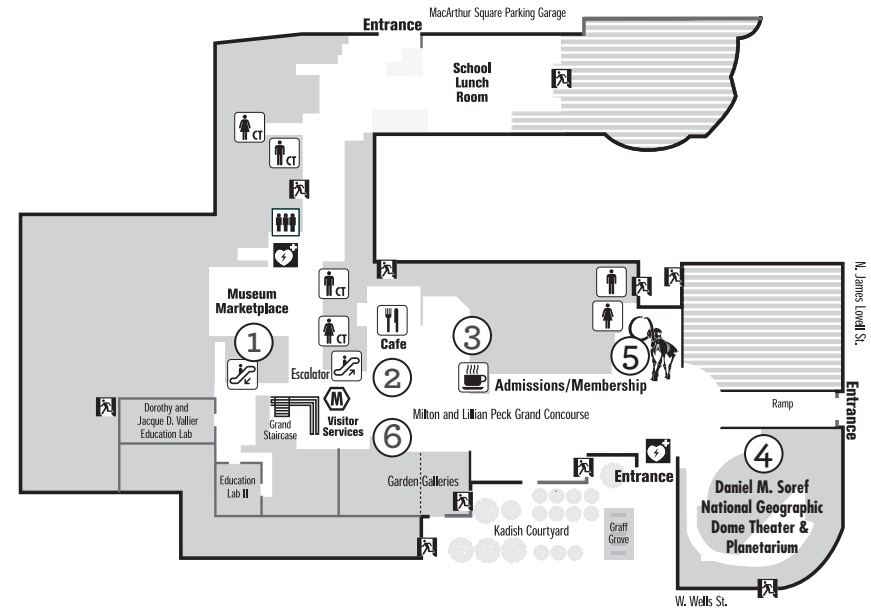
See where the ideas and technologies of Asia, Africa and Europe began to collide 5,000 years ago.

## MILWAUKEE PUBLIC MUSEUM

800 W. Wells St., Milwaukee, WI 53233 • [www.mpm.edu](http://www.mpm.edu)

# MILWAUKEE PUBLIC MUSEUM

## Museum Map & Visitor's Guide



## GROUND FLOOR

### 1. The Museum Marketplace

Find the perfect keepsake of your Museum experience. Choose from jewelry, rocks, books, educational toys and unique products from around the world. Members and jurors receive a 10% discount.

### 2. Museum Café

Choose from salads, pizza, deli items, soup and grill-style items. Food by Zilli Hospitality Group.

### 3. Coffee Kiosk

Enjoy an assortment of baked goods, coffee drinks and other beverages. Featuring Milwaukee's own Stone Creek Coffee Roasters.

### 4. Daniel M. Soref National Geographic Dome Theater & Planetarium

Experience edge-of-your-seat excitement on a six-story-tall screen.

### 5. The Hebior Mammoth

See the cast of a complete mammoth skeleton found less than 30 miles from MPM.

### 6. Will Call

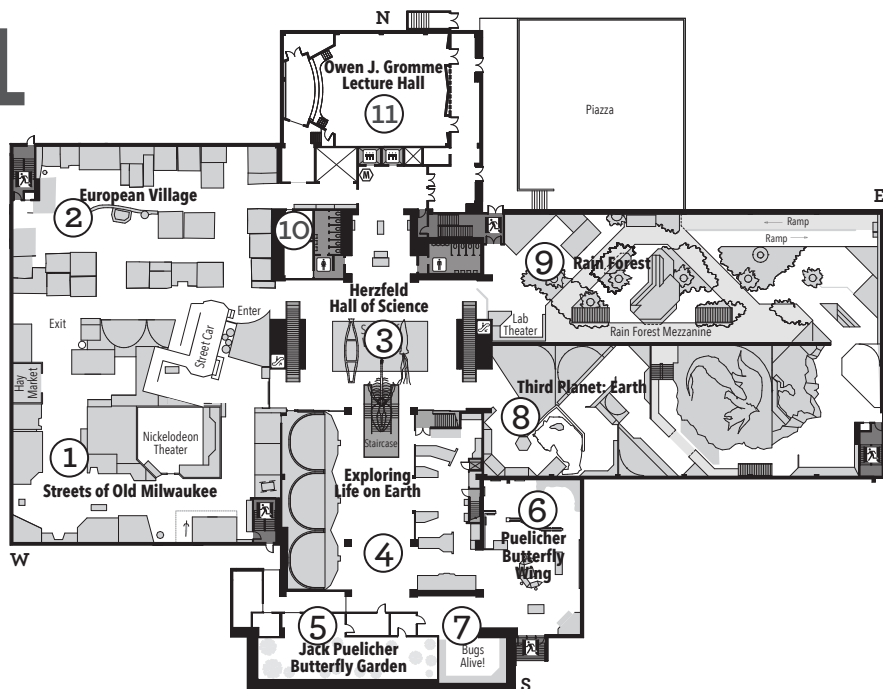
Pick up tickets purchased online and over the phone.

### Amenities

Find wheelchair and stroller rentals at admissions, and vending machines and an ATM in the Café.



# 1



## FIRST FLOOR

### 1. Streets of Old Milwaukee

Travel back in time to a bustling turn-of-the-century Milwaukee.

### 2. European Village

Celebrate the ethnic heritage of 30 European cultures.

### 3. A Sense of Wonder

See nearly 1,000 specimens and artifacts, including a 36-foot-long humpback whale skeleton.

### 4. Exploring Life on Earth

Science comes alive through animatronics and hands-on labs.

### 5. Jack Puelicher Butterfly Garden (Closes at 4:45 p.m.)

Experience live butterflies as you stroll through an indoor garden.

### 6. Puelicher Butterfly Wing

Raise your insect IQ through interactive stations, videos and a super-sized butterfly habitat.

### 7. Bugs Alive! Insects and Their Relatives

See live bugs from around the world, from tarantulas to assassin bugs.

### 8. The Third Planet: Earth

Look at the Earth's interior and step back in time to when dinosaurs ruled.

### 9. Rain Forest

Walk in a biologically diverse, two-story Costa Rican rain forest.

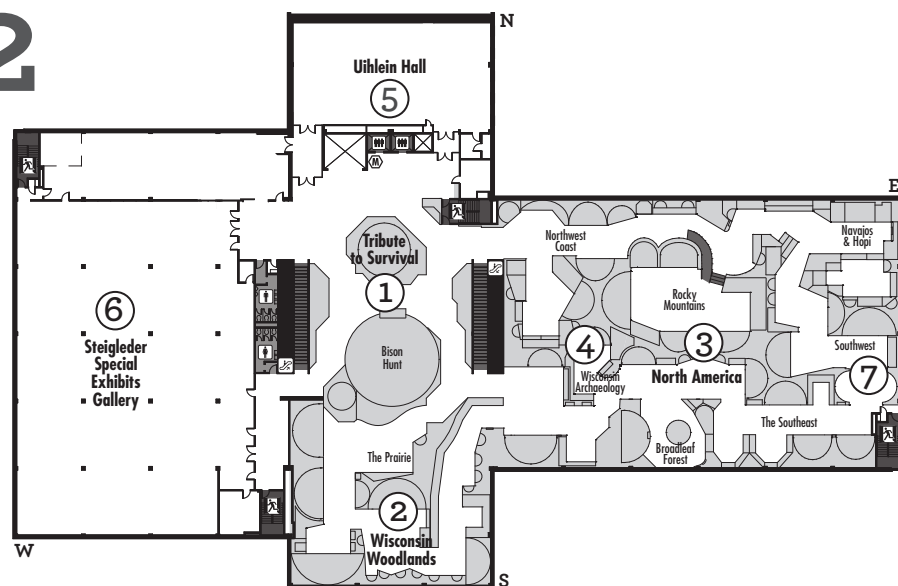
### 10. Family Quiet Space

A quiet, private space for nursing mothers and families with small children.

### 11. Owen J. Gromme Lecture Hall

Location of lectures and special events.

# 2



## SECOND FLOOR

### 1. A Tribute to Survival

Learn about the powerful history of today's American Indians.

### 2. Wisconsin Woodlands

See highlights of Wisconsin's diverse animal and plant life.

### 3. North America

Walk through the United States to witness changing landscapes and native cultures.

### 4. Wisconsin Archaeology: Pieces of the Puzzle

See amazing artifacts from Aztalan, the state's most significant archaeological site.

### 5. Uihlein Hall

Special event rental space.

### 6. Steigleder Hall

Special event rental space.

### 7. Native Games

Learn about native games, many of which can be found among tribes in the United States and Canada.



Tour Meeting Spot



Rest rooms



Changing Tables



Elevator



Escalator



Emergency Exits



AED